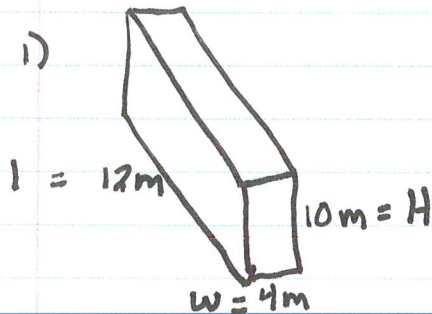


Name: Mike Tash  
Date: May 21, 2020  
Block: B

## Math 7 Assignment Worksheet "Volume of Prism"

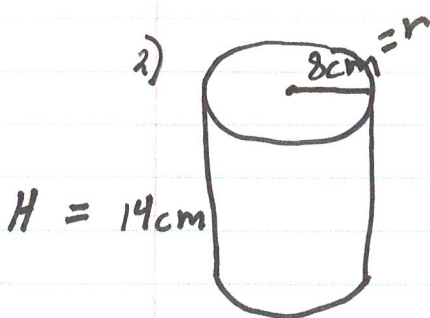
Find / calculate volume for the following



Sol'n

$$\begin{aligned} \text{Vol} &= (\text{A of B}) \cdot H \\ &= (\text{A of R}) \cdot H \\ &= w \cdot l \cdot H \\ &= 4m \cdot 12m \cdot 10m \\ &= 480m^3 \end{aligned}$$

Volume of Rectangular Based Prism is  $480m^3$



Sol'n

$$\begin{aligned} \text{Vol} &= (\text{A of B}) \cdot H \\ &= (\text{A of C}) \cdot H \\ &= \pi \cdot r \cdot r \cdot H \\ &\approx 3.14 \cdot 8cm \cdot 8cm \cdot 14cm \\ &\approx 2813.44cm^3 \end{aligned}$$

Volume of Circular Based Prism is approx  $2813.44cm^3$