

# Sample


Name:

Date:

Block:

## Math 7 Assignment Page 298 Chapter 8 Review

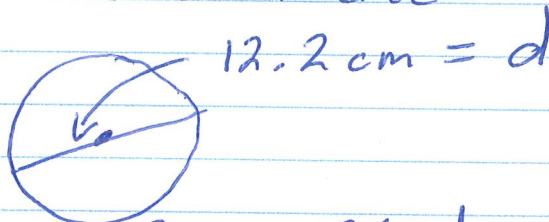
Define / match definition with words

1) The distance from center of circle to point on the circle Radius ex) 

4) The ratio  $\frac{\text{circumference}}{\text{diameter}}$   $\pi = 3.14$

ii) Calculate circumference

b) given

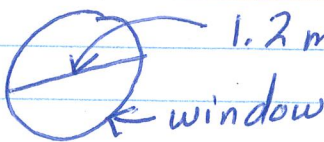


Sol'n

$$\begin{aligned} \text{Circ} &= \pi \cdot d \\ &\approx 3.14 \cdot 12.2 \text{ cm} \\ &\approx 6.908 \text{ cm} \end{aligned}$$

13) Given: circular window diameter = d = 1.2 m

drawing

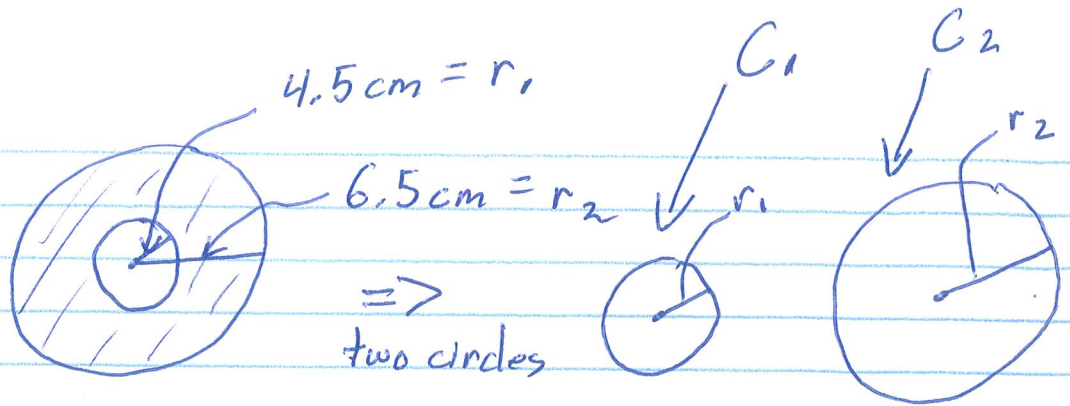


Question: Calculate circ ?

$$\begin{aligned} \text{Sol'n: } \text{circ} &= \pi \cdot d \\ &\approx 3.14 \cdot 1.2 \text{ m} \\ &\approx 3.768 \text{ m} \end{aligned}$$

The circumference of window is  $\approx 3.768 \text{ m}$

18) Given:



Question: What is area of shaded region?

Sol'n

1) Area of Small Circle

2) Area of Large Circle

3) Area of shaded = Area of Large - Area of Small

$$1) \text{ A of } C_1 = \pi r_1^2$$

$$\approx 3.14 \times 4.5 \text{ cm} \times 4.5 \text{ cm}$$

$$\approx 63.585 \text{ cm}^2$$

$$2) \text{ A of } C_2 = \pi r_2^2$$

$$\approx 3.14 \times 6.5 \text{ cm} \times 6.5 \text{ cm}$$

$$\approx 132.665 \text{ cm}^2$$

$$3) \text{ A of Shade} = \text{A of } C_2 - \text{A of } C_1$$

$$\approx 132.665 \text{ cm}^2 - 63.585 \text{ cm}^2$$

$$\approx 69.08 \text{ cm}^2$$

$$\text{Area of shaded} \approx 69.08 \text{ cm}^2$$