

Name \_\_\_\_\_

Date \_\_\_\_\_

Use with textbook page 27.

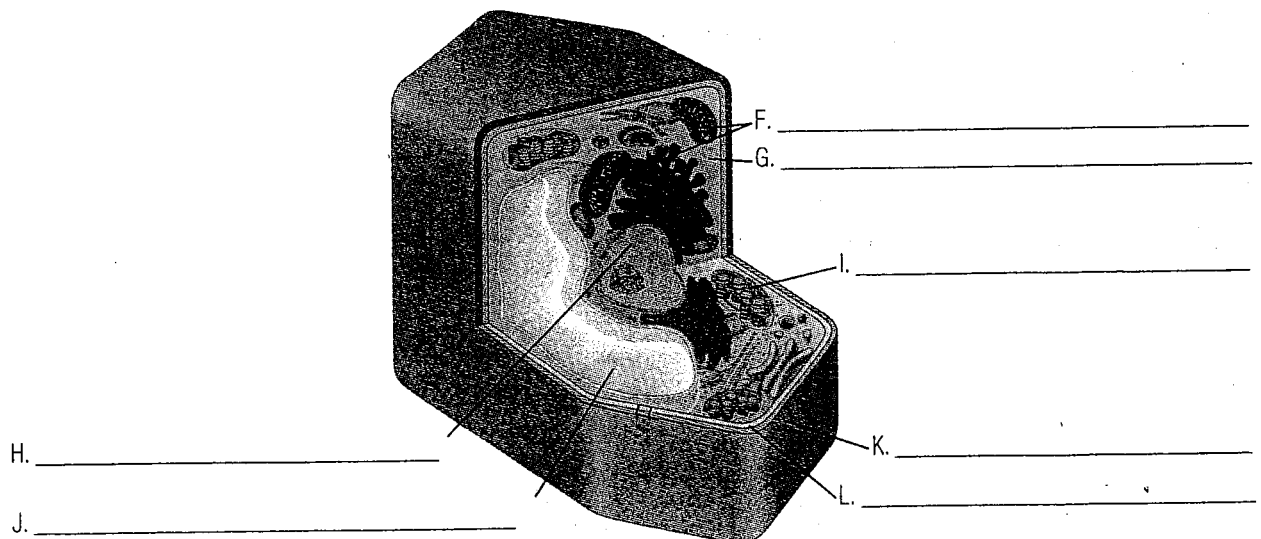
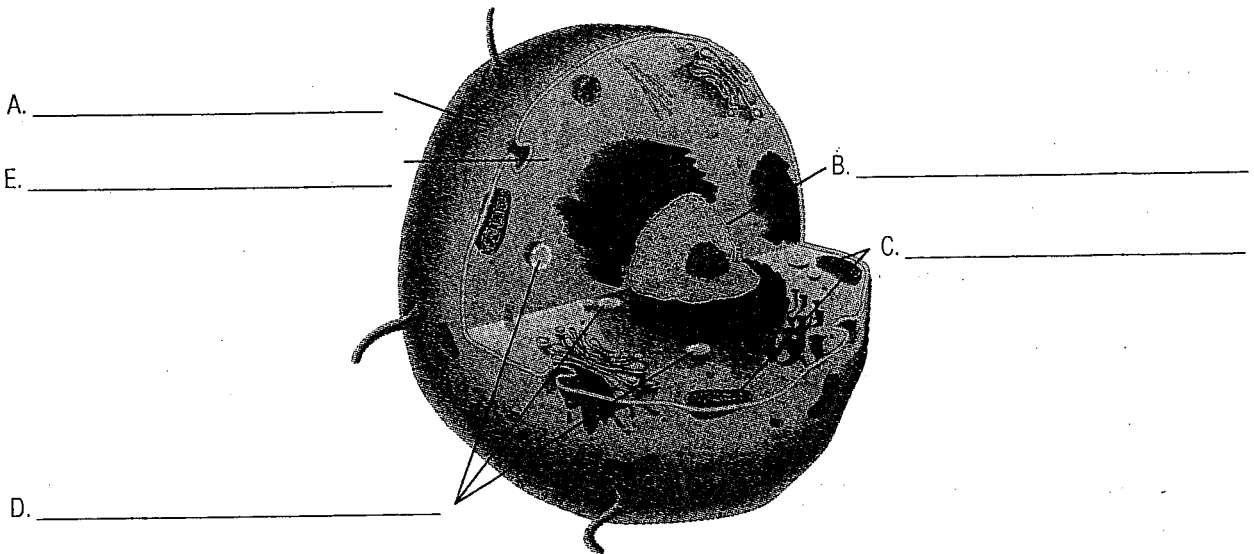
## Parts of cells

### Vocabulary

cell membrane  
nucleus  
cell wall  
chloroplast

vacuole  
vacuoles  
cytoplasm  
mitochondria

Use the terms in the box to label the parts of an animal cell and a plant cell. Terms may be used more than once.



Use with textbook pages 24–29.

## Inside a cell

### Vocabulary

bacteria	living thing
cell theory	mitochondria
cell membrane	organelle
cell wall	prokaryotic
chloroplasts	nucleus
cytoplasm	vacuoles
eukaryotic	viruses

Use the terms in the vocabulary box to fill in the blanks. Each term may be used only once. You will not need to use all the terms.

1. A(n) \_\_\_\_\_ is a cell structure in which functions are carried out to ensure the cell's survival.
2. Each cell is surrounded by a \_\_\_\_\_ that separates the interior of the cell from its surroundings.
3. Within the cell is a jelly-like substance called \_\_\_\_\_.
4. The \_\_\_\_\_ is the organelle that controls all the activities within the cell.
5. The \_\_\_\_\_ are the energy producers in the cell.
6. \_\_\_\_\_ are temporary storage compartments that sometimes store waste.
7. The \_\_\_\_\_ is a tough, rigid structure that surrounds the cell membrane and protects the cell.
8. The \_\_\_\_\_ trap the energy from the Sun and change it into chemical energy.
9. Plant and animal cells are examples of \_\_\_\_\_ cells.
10. \_\_\_\_\_ cells are cells that do not have organelles with membranes around them.
11. \_\_\_\_\_ are examples of prokaryotic cells that can cause disease.
12. \_\_\_\_\_ are examples of non-living things that are able to reproduce.